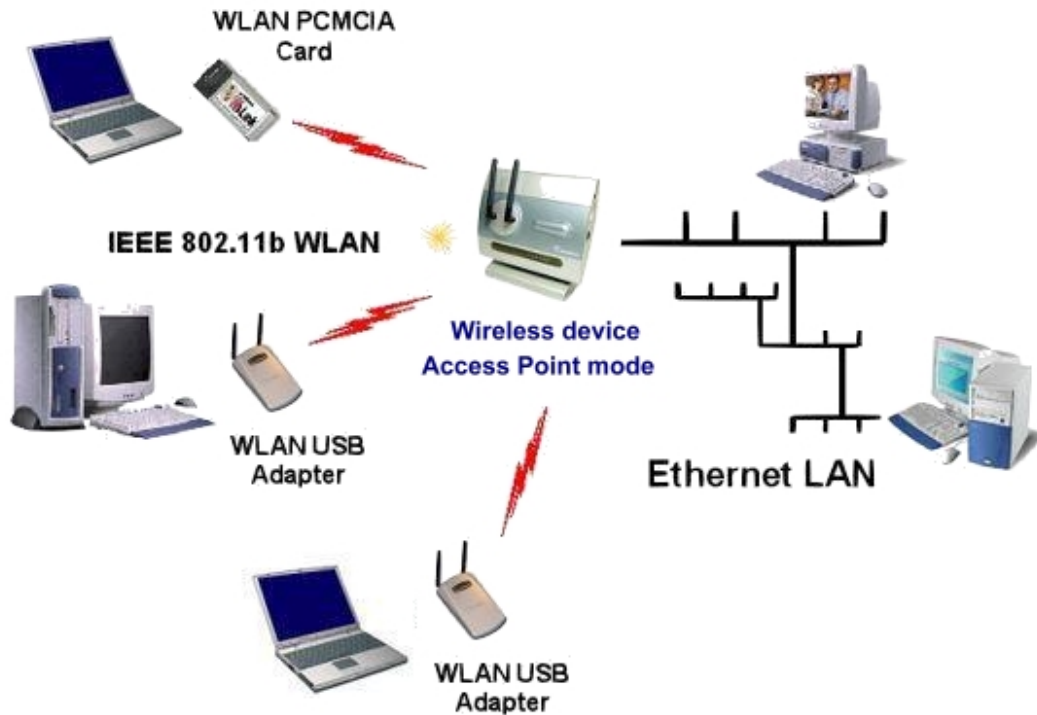


Access Point Mode

A) Application & Note:



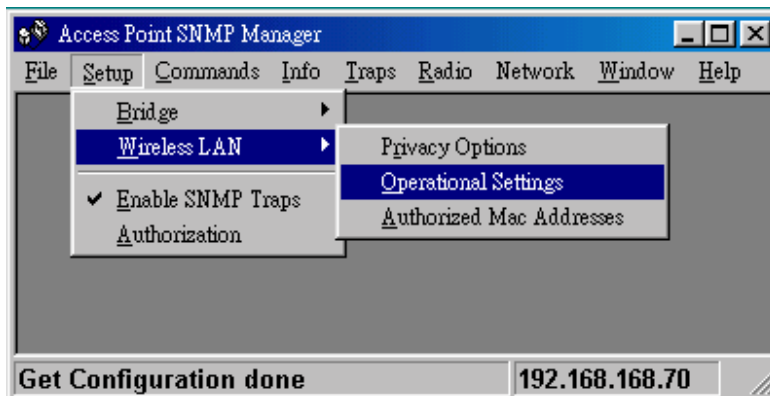
- All WLAN USB Adapters / WLAN PCMCIA cards operating mode must be configured to **Infrastructure mode**.
- All WLAN USB Adapters / WLAN PCMCIA cards and Wireless devices (“**Access Point**” mode) must be configured with the same **ESSID** and use the same **Radio Channel**.
- All WLAN USB Adapters / WLAN PCMCIA cards allows to share files between computers by using TCP/IP, IPX and NetBEUI protocol.

B) Device setting :

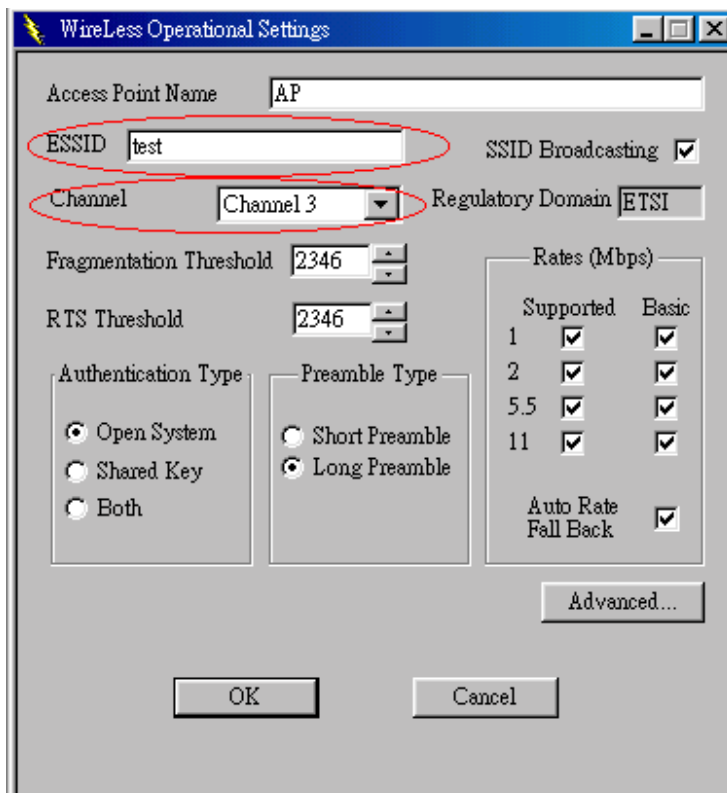
There are two utilities to configure Wireless device , one is “ **SNMP Manager** ” another is “ **AP Utility** ”.

SNMP Manager :

1. “ **Setup** ” menu → “ **Wireless LAN** ” → “ **Operational Settings** ”

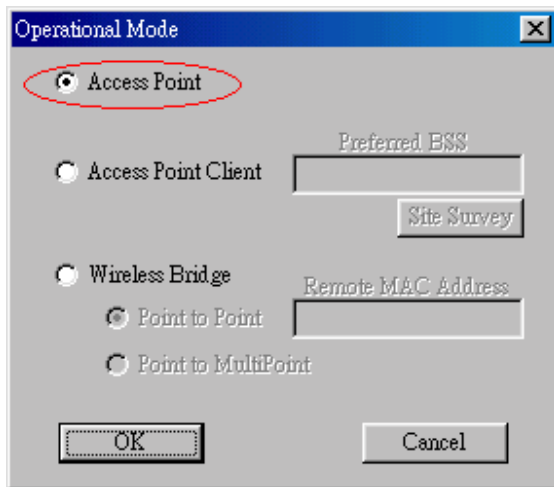


2. In “ **Wireless Operational Settings** ” dialog box → **ESSID** and **Channel** :
All WLAN USB Adapters / WLAN PCMCIA cards and Wireless device (“ **Access Point** ” mode) must be configured with the same **ESSID** and **Channel**.



3. In “ **Wireless Operational Settings** ” dialog box → press “ **Advanced...** ” button

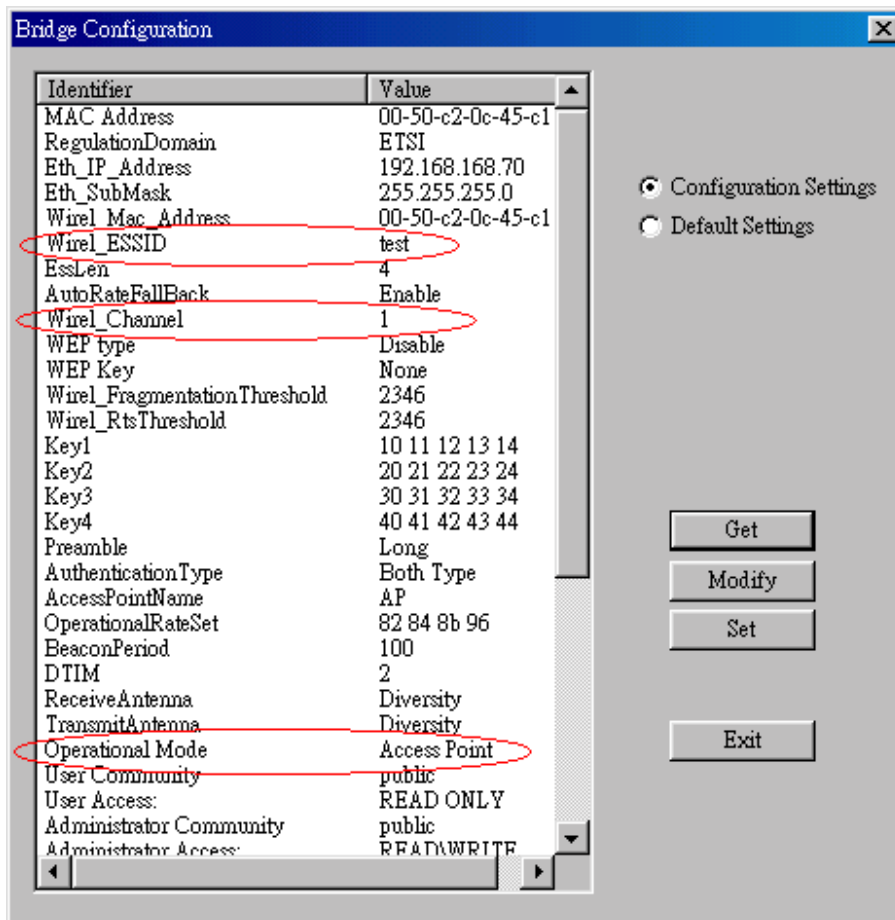
4. In “Operational Mode” dialog box → select “Access Point”



5. Select “File” menu → press “Download Changes” to save the changes

AP Utility :

1. The “Get” button in order to view the current parameters of the Wireless device



2. Wirel_ESSID & Wirel_Channel :

All WLAN USB Adapters / WLAN PCMCIA cards and Wireless device (“**Access Point**” mode) must be configured with the same **Wirel_ESSID** and use the same **Wirel_Channel**.

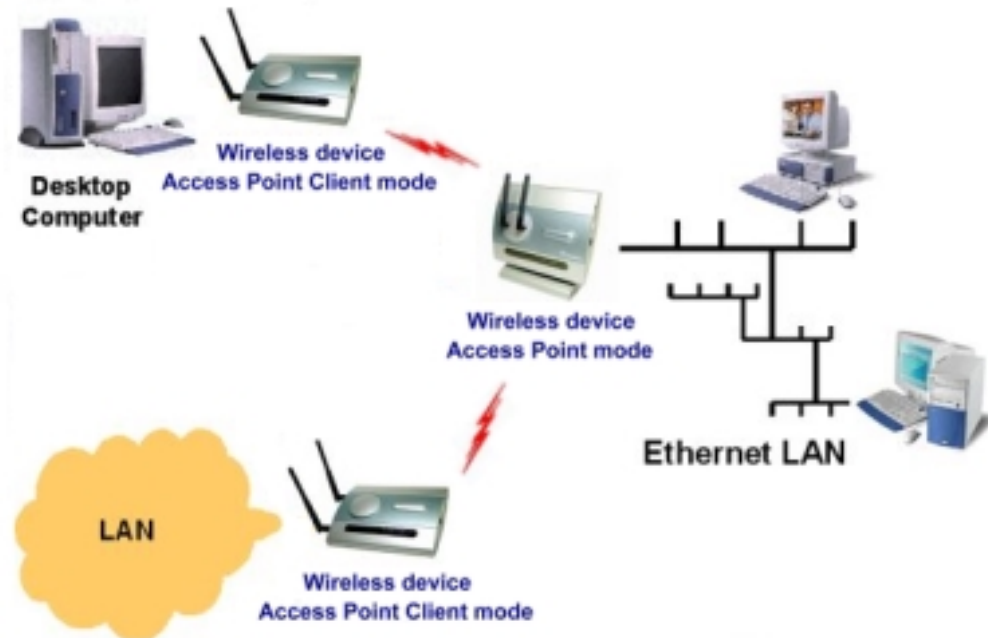
3. Operational Mode :

Select “ **Access Point** ” mode

4. Press “**Set**” button to save the changes.

Access Point Client Mode

A) Application & Note:



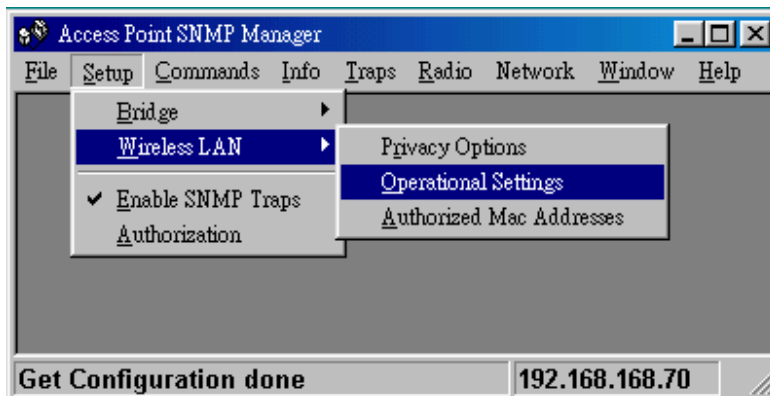
- In order to connect to the Wireless device (“**Access Point**” mode), other Wireless devices can set to “**Access Point Client**” mode
- When Wireless device operating mode set to “**Access Point Client**” mode, the **Preferred BSSID** is needed to set.
- The Wireless device (“**Access Point**” mode) and Wireless device (“**Access Point Client**” mode) must be configured with **the same ESSID / Radio Channel** and in the same **subnet**.
- When “**Access Point Client**” mode is chosen, the Wireless device (“**Access Point Client**” mode) is acting as client with wireless connection to an Wireless device (“**Access Point**” mode)
- All WLAN USB Adapters / WLAN PCMCIA cards can not connect to Wireless device when it set to “**Access Point Client**” mode.
- **Preferred BSSID** : It is enabled only if you select the **Access Point Client** option. BSSID corresponds to the MAC Address of the desired Wireless device (“**Access Point**” mode), which you want to link.

B) Device setting :

There are two utilities to configure Wireless device , one is “ **SNMP Manager** ” another is “ **AP Utility** ”.

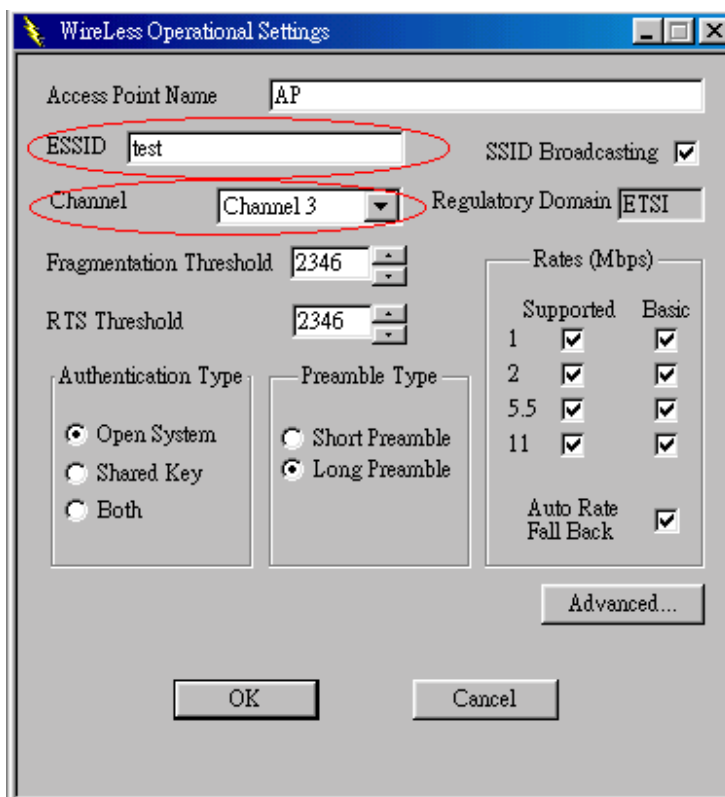
SNMP Manager :

1. “ **Setup** ” menu → “ **Wireless LAN** ” → “ **Operational Settings** ”



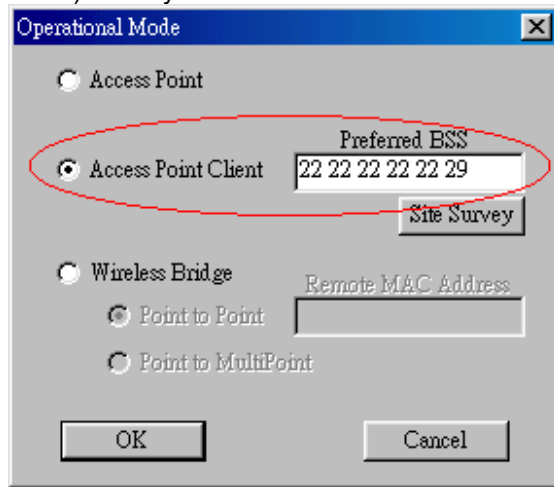
2. In “ **Wireless Operational Settings** ” dialog box :

ESSID and **Channel** : The Wireless device (“ **Access Point Client** ” mode) and another Wireless device (“ **Access Point** ” mode) must be configured with **the same ESSID** and use **the same Channel**.



3. In “ **Wireless Operational Settings** ” dialog box → press “ **Advanced...** ” button

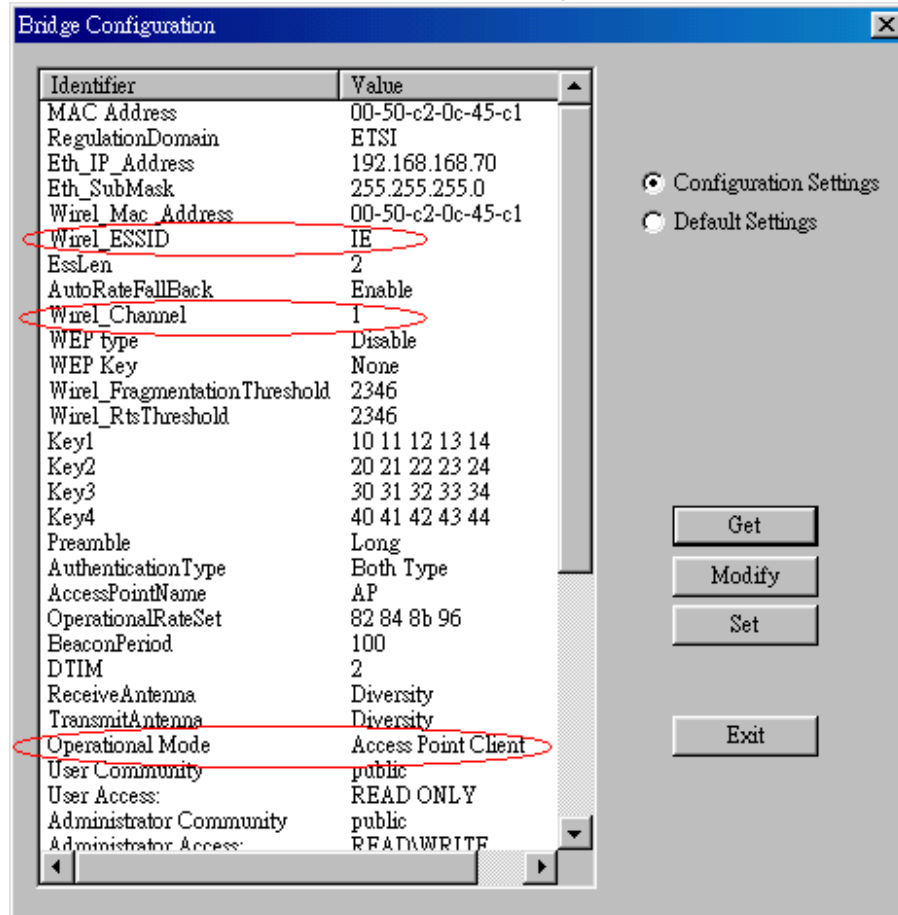
4. In “Operational Mode” dialog box → select “Access Point Client” → Fill in “Preferred BSS” with MAC Address of the desired Wireless device (“Access Point” mode) which you want to link.

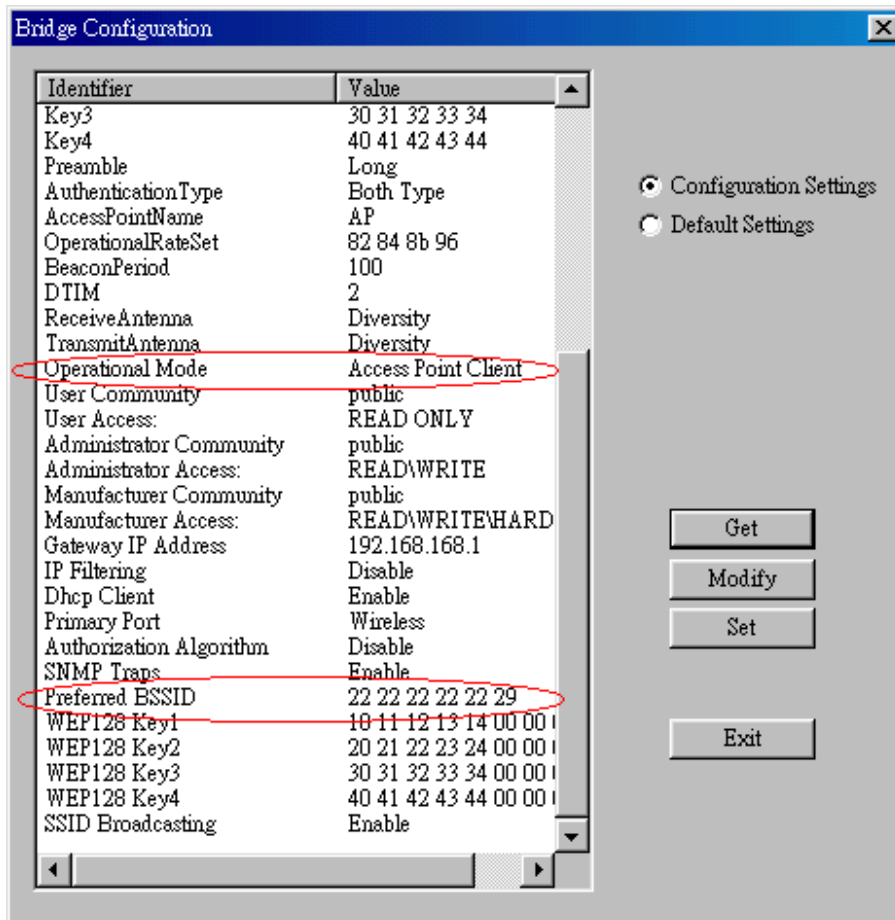


5. Select “ File ” menu → press “ Download Changes ” to save the changes

AP Utility :

1. The “Get” button in order to view the current parameters of the Wireless device





2. Wirel_ESSID & Wirel_Channel :

The Wireless device (“**Access Point Client**” mode) and Wireless device (“**Access Point**” mode) must be configured with the same **Wirel_ESSID** and **Wirel_Channel**.

3. Operational Mode :

Select “**Access Point Client**” mode

4. Preferred BSSID :

Fill with MAC Address of the desired Wireless device (“**Access Point**” mode) which you want to link.

5. Press “**Set**” button to save the changes.

Wireless Bridge Point to Point Mode

A) Application & Note:



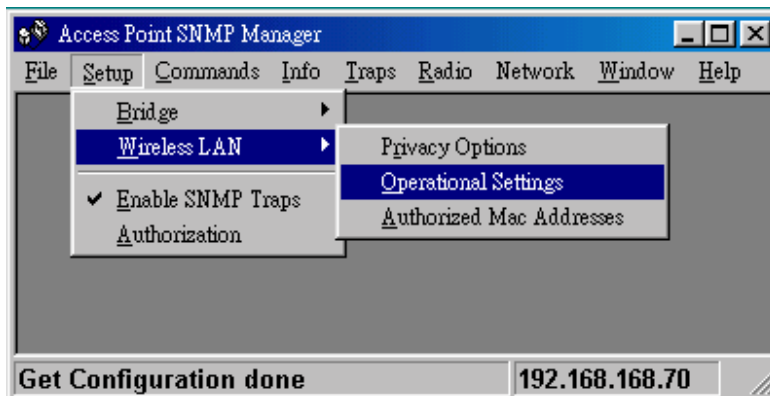
- Two Wireless devices operating mode must be configured to “ **Wireless Bridge Point to Point** ” mode.
- When Wireless device operating mode set to “**Wireless Bridge Point to Point**” mode, also the “**Remote MAC Address**” is needed to set.
- All Wireless devices (“**Wireless Bridge Point to Point**” mode) must be configured with **the same ESSID / Radio Channel** and in the same **subnet**.
- All WLAN USB Adapters / WLAN PCMCIA cards can not connect to the Wireless device when it configured to “**Wireless Bridge Point to Point**” mode.

B) Device setting :

There are two utilities to configure Wireless device , one is “ **SNMP Manager** ” another is “ **AP Utility** ”.

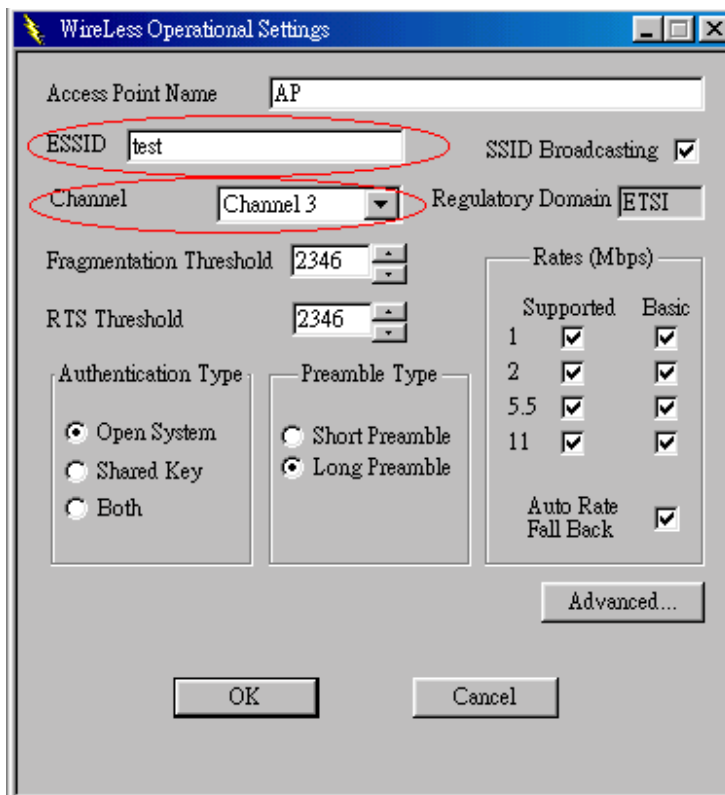
SNMP Manager :

1. “**Setup**” menu → “**Wireless LAN**” → “**Operational Settings**”



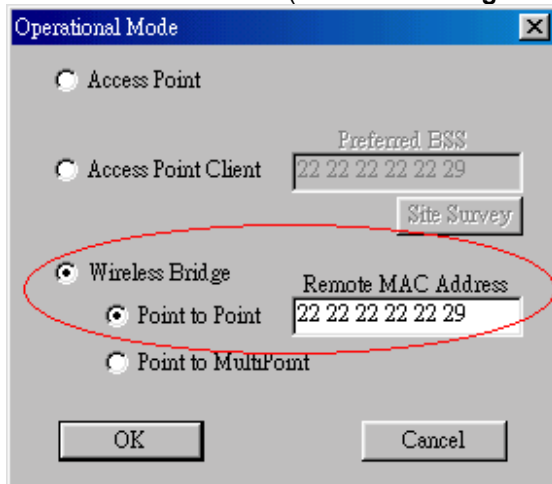
2. “ **Wireless Operational Settings** ” dialog box :

ESSID and **Channel** : The Wireless device (“ **Wireless Bridge Point to Point** ” mode) and another Wireless device (“ **Wireless Bridge Point to Point** ” mode) must be configured with the same **ESSID** and use the same **Channel**.



3. In “ **Wireless Operational Settings** ” dialog box → press “ **Advanced...** ” button

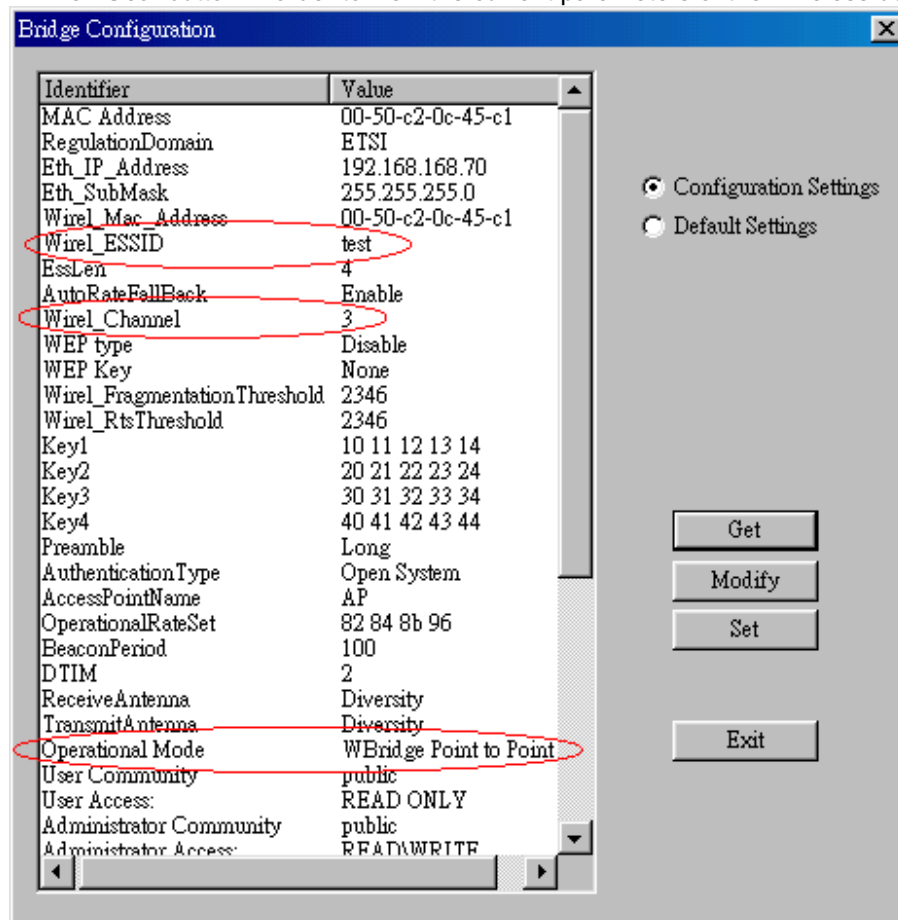
- In “Operational Mode” dialog box → select “Wireless Bridge” → select “Point to Point” → fill in “Remote MAC Address” with MAC Address of the desired Wireless device (“Wireless Bridge Point to Point” mode) which you want to link.

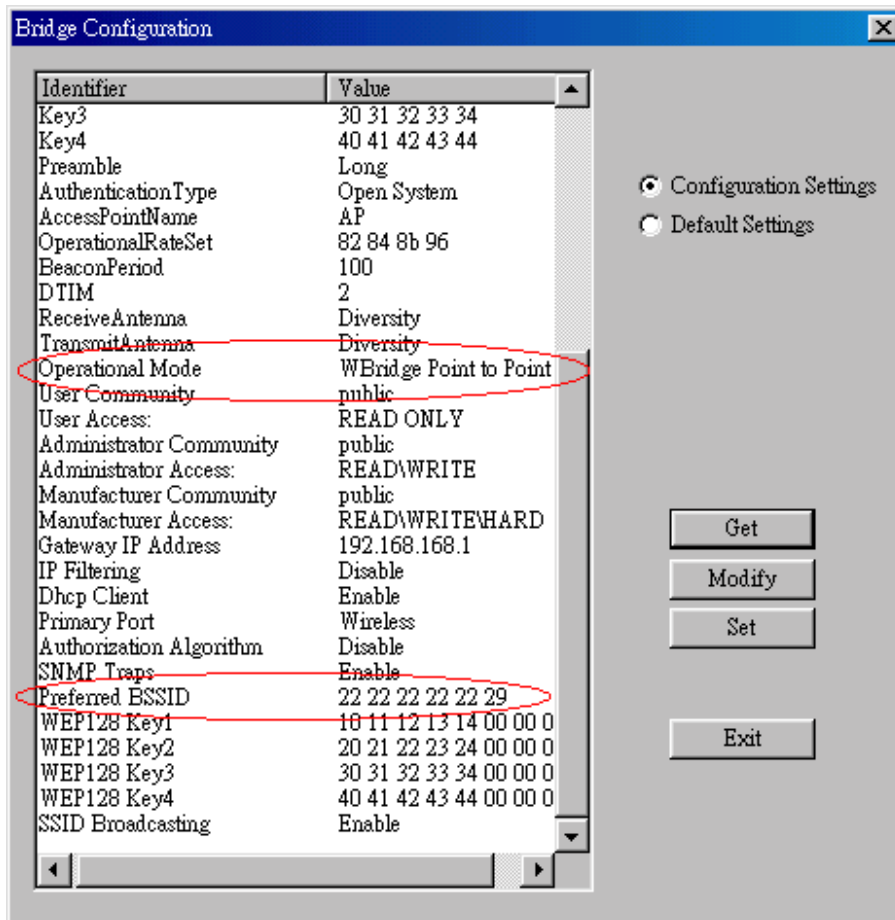


- Select “File” menu → press “Download Changes” to save the changes

AP Utility :

- The “Get” button in order to view the current parameters of the Wireless device





2. **Wired_ESSID & Wired_Channel :**

One Wireless device (“**Wireless Bridge Point to Point**” mode) and another Wireless device (“**Wireless Bridge Point to Point**” mode) must be configured with the same **Wired_ESSID** and **Wired_Channel**.

3. **Operational Mode :**

Select “**WBridge Point to Point**” mode

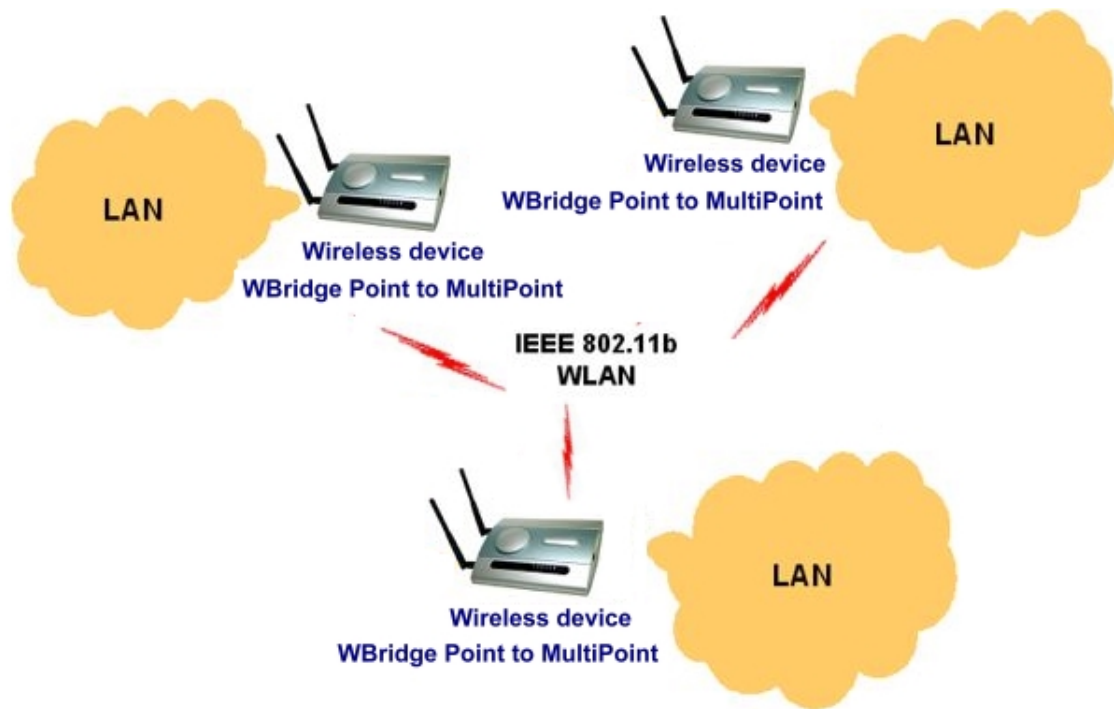
4. **Preferred BSSID :**

Fill with MAC Address of the desired Wireless device (“**Wireless Bridge Point to Point**” mode) which you want to link.

5. Press “**Set**” button to save the changes.

Wireless Bridge Point to MultiPoint

A) Application & Note:



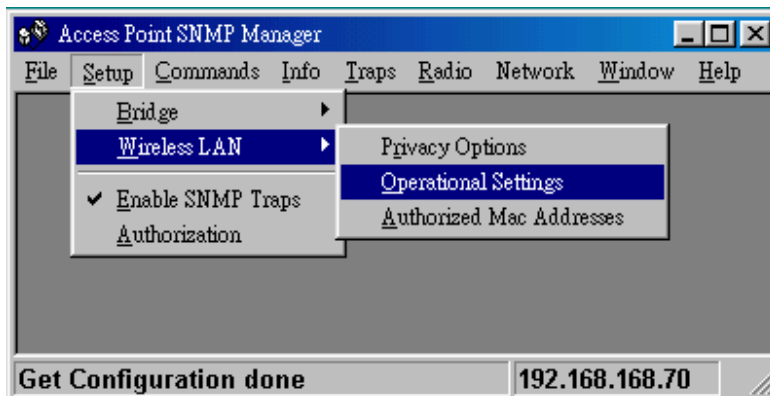
- All Wireless device's operating mode must be configured to “ **Wireless Bridge Point to MultiPoint** ” mode.
- All Wireless devices (“ **Wireless Bridge Point to MultiPoint** ” mode) must be configured with **the same ESSID / Radio Channel** and in the same **subnet**.
- All WLAN USB Adapters / WLAN PCMCIA cards can not connect to the Wireless device when it configured to “ **Wireless Bridge Point to MultiPoint** ” mode.

B) Device setting :

There are two utilities to configure Wireless device , one is “ **SNMP Manager** ” another is “ **AP Utility** ”.

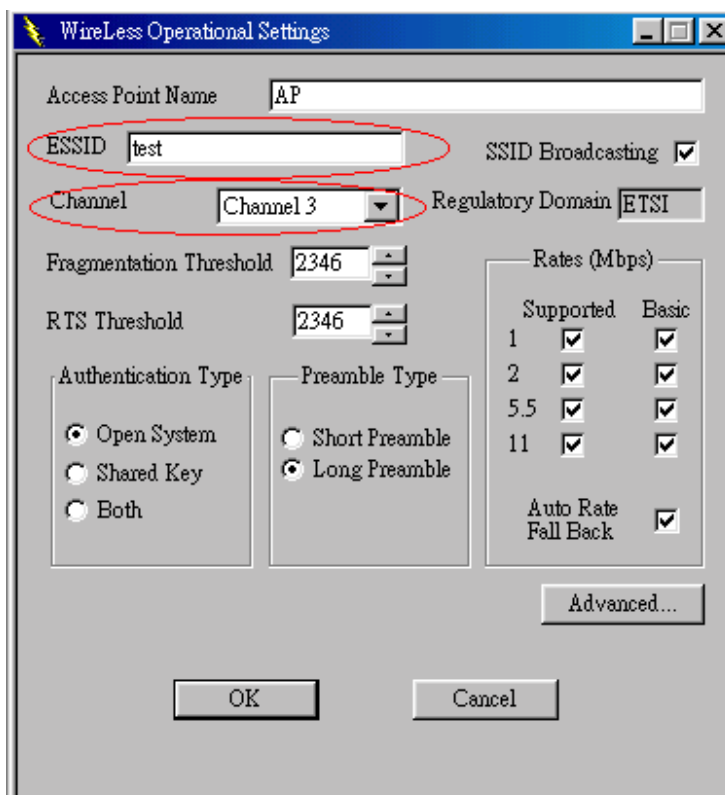
SNMP Manager :

1. “**Setup**” menu → “ **Wireless LAN** ” → “ **Operational Settings** ”



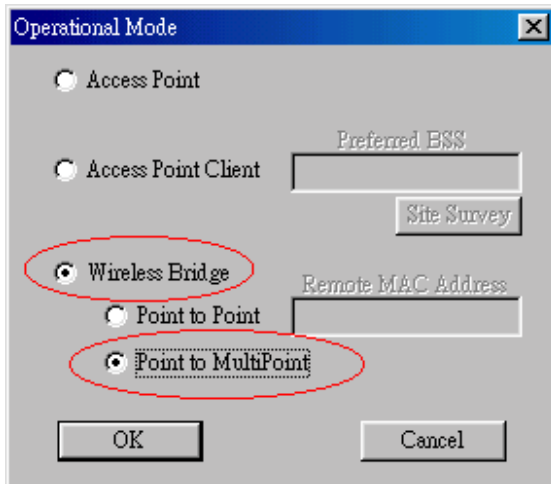
2. In “ **Wireless Operational Settings** ” dialog box :

ESSID and **Channel** : The Wireless device (“**Wireless Bridge Point to MultiPoint**” mode) and other Wireless devices (“**Wireless Bridge Point to MultiPoint**” mode) must be configured with the same **ESSID** and use the same **Channel**.



3. In “ **Wireless Operational Settings** ” dialog box → press “ **Advanced...** ” button

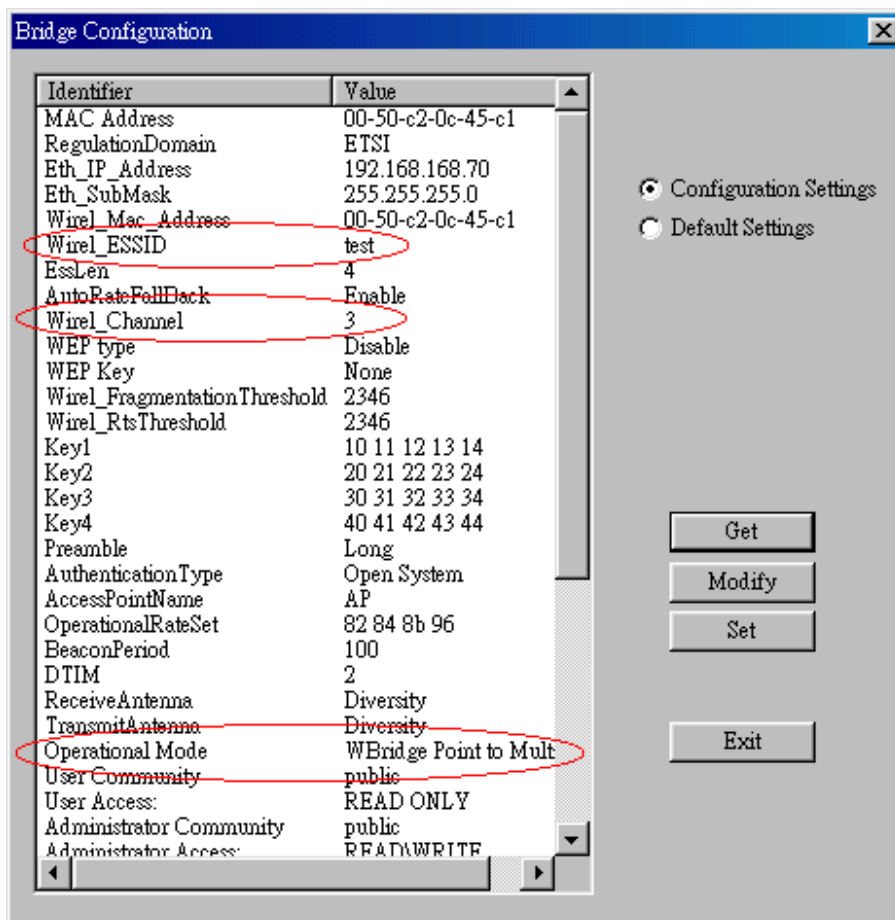
- In “Operational Mode” dialog box → select “Wireless Bridge” →
→ select “Point to MultiPoint”



- Select “File” menu → press “Download Changes” to save the changes

AP Utility :

- The “Get” button in order to view the current parameters of the Wireless device



2. Wirel_ESSID & Wirel_Channel :

All Wireless devices (“**Wireless Bridge Point to MultiPoint**” mode) must be configured with the same **Wirel_ESSID** and **Wirel_Channel**.

3. Operational Mode :

Select “**WBridge Point to MultiPoint**” mode

4. Press “**Set**” button to save the changes.